

From I.T to Intelligent Transformation

A large sculpture of a dinosaur, constructed from thousands of blue network cables, stands in front of a modern building at night. The building has large windows and a staircase, and the scene is illuminated by warm interior lights and cool blue light from the sculpture.

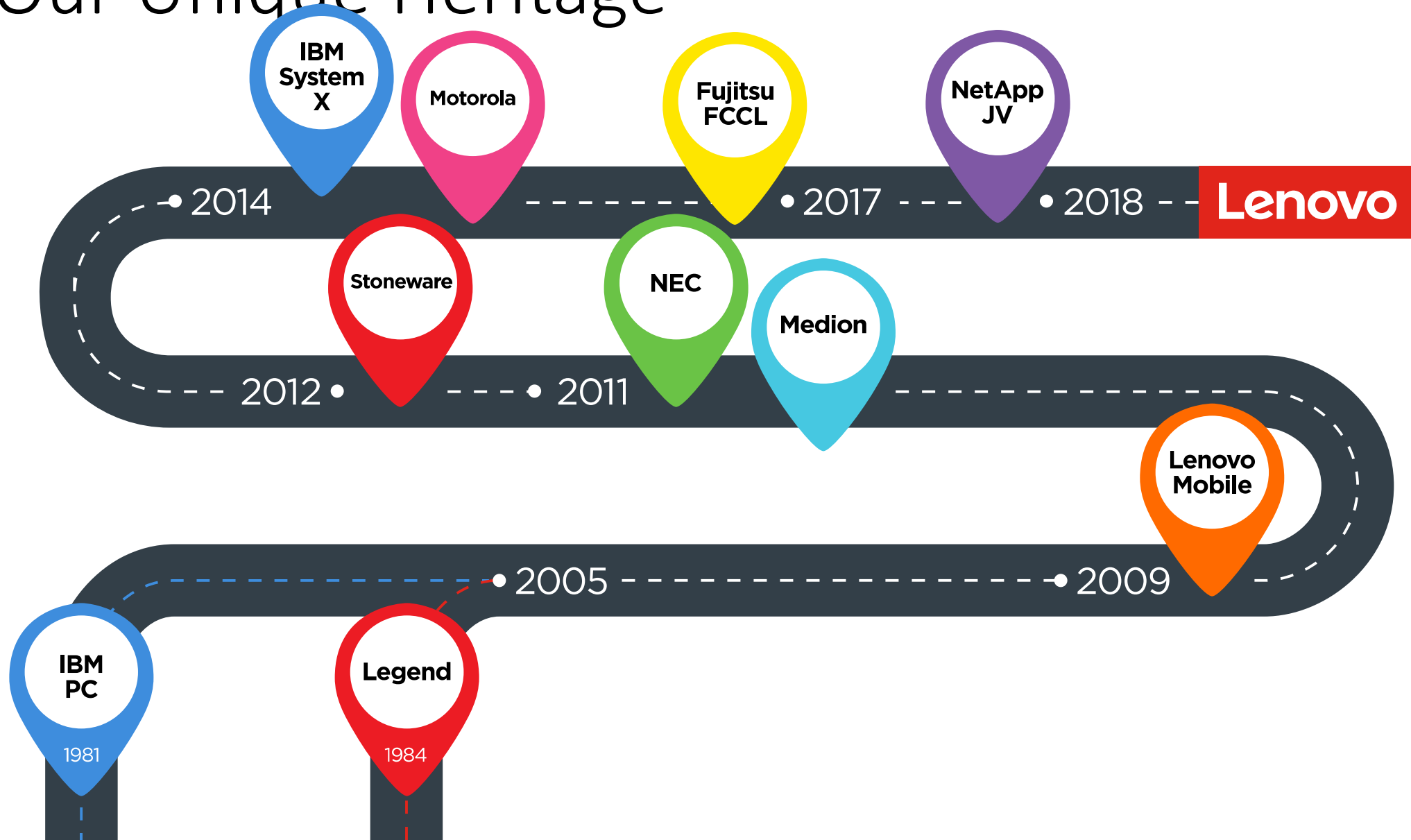
Vangelis Mitakos, Enterprise Sales Manager
Lenovo Greece & Cyprus

Lenovo

OUR VISION

**INTELLIGENT
TRANSFORMATION**

Our Unique Heritage





60

countries and business in
160 countries

15

R&D locations worldwide

37

manufacturing facilities
with
12 fully-owned

\$1.2B

investment in AI R&D

3

new AI innovation centers

50K

employees

3.2K

engineers, researchers
and scientists

The digital universe is doubling in size every

2yrs

Jobs requiring AI skills will
increase

400%
by 2020

The Internet of Things will

x2

From 10 billion to 20 billion devices, by
2020

80%

of digitally stored data is
unstructured



**Intelligent
Transformation**



Data

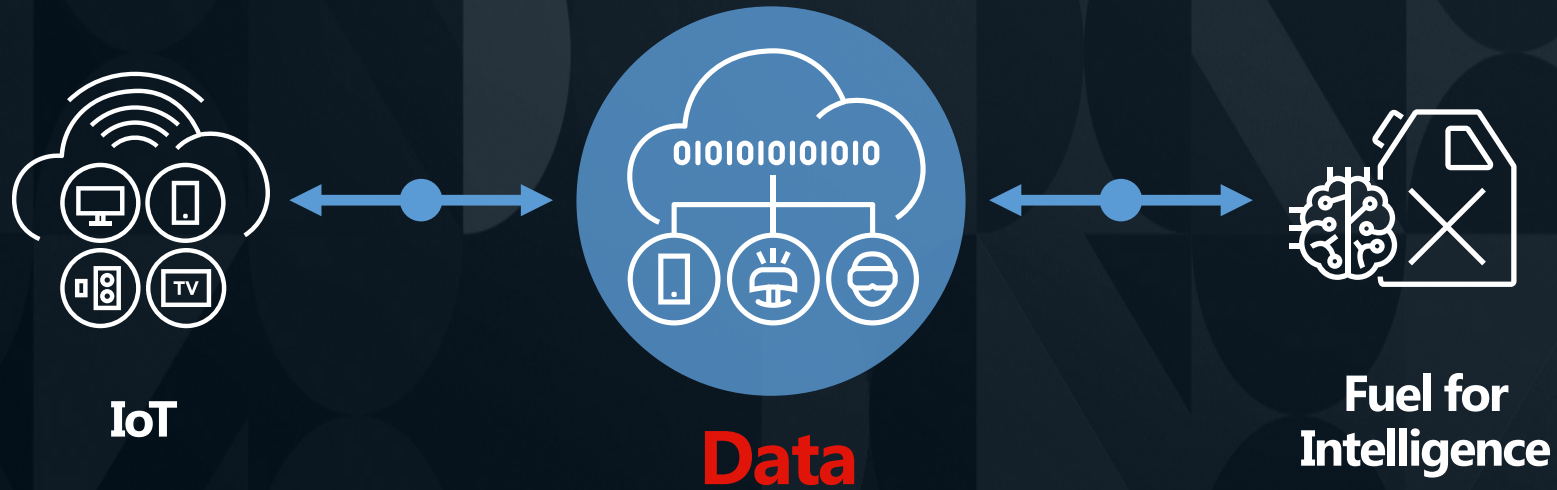


**Computing
Power**

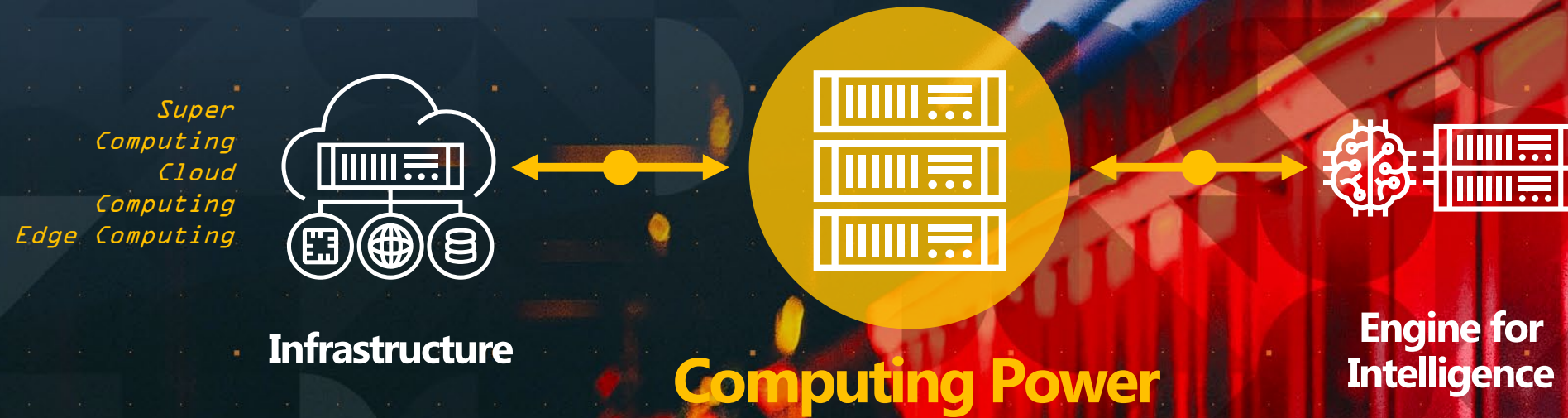


Algorithm

DATA & ABILITY TO SCALE

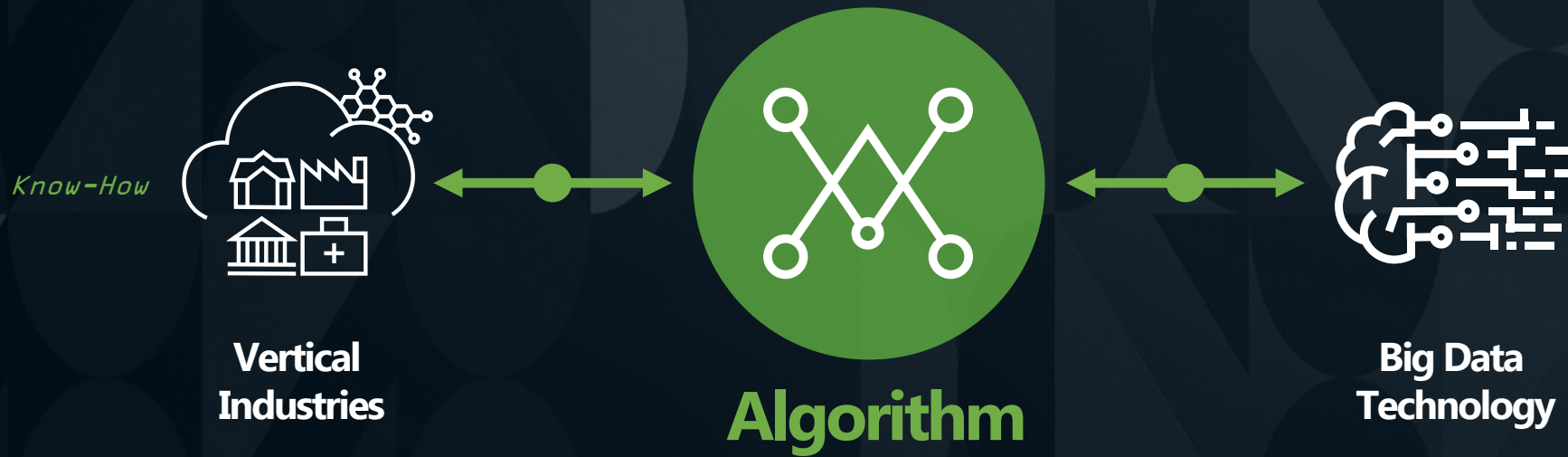


COMPUTING POWER TO DRIVE TRANSFORMATION



ALGORITHMS INDUSTRY INTELLIGENCE

ENABLING



INTELLIGENT TRANSFORMATION THROUGH INNOVATION FOLDABLE X1 FAMILY



NANO PC & NANO IOT PC





RAZR FOLDABLE

Introducing ThinkPad Privacy Guard with Privacy Alert

Protect yourself from shoulder surfing!

- Lenovo's built in ePrivacy filter
- Glance gaze* detection proactive "blind-spot" notification
- Glance presence* detection: locks the system when away



*Presence and Gaze detection require IR camera
Gaze detection offered on PrivacyGuard models

Lenovo™

Connecting Intelligent Transformation with 5G

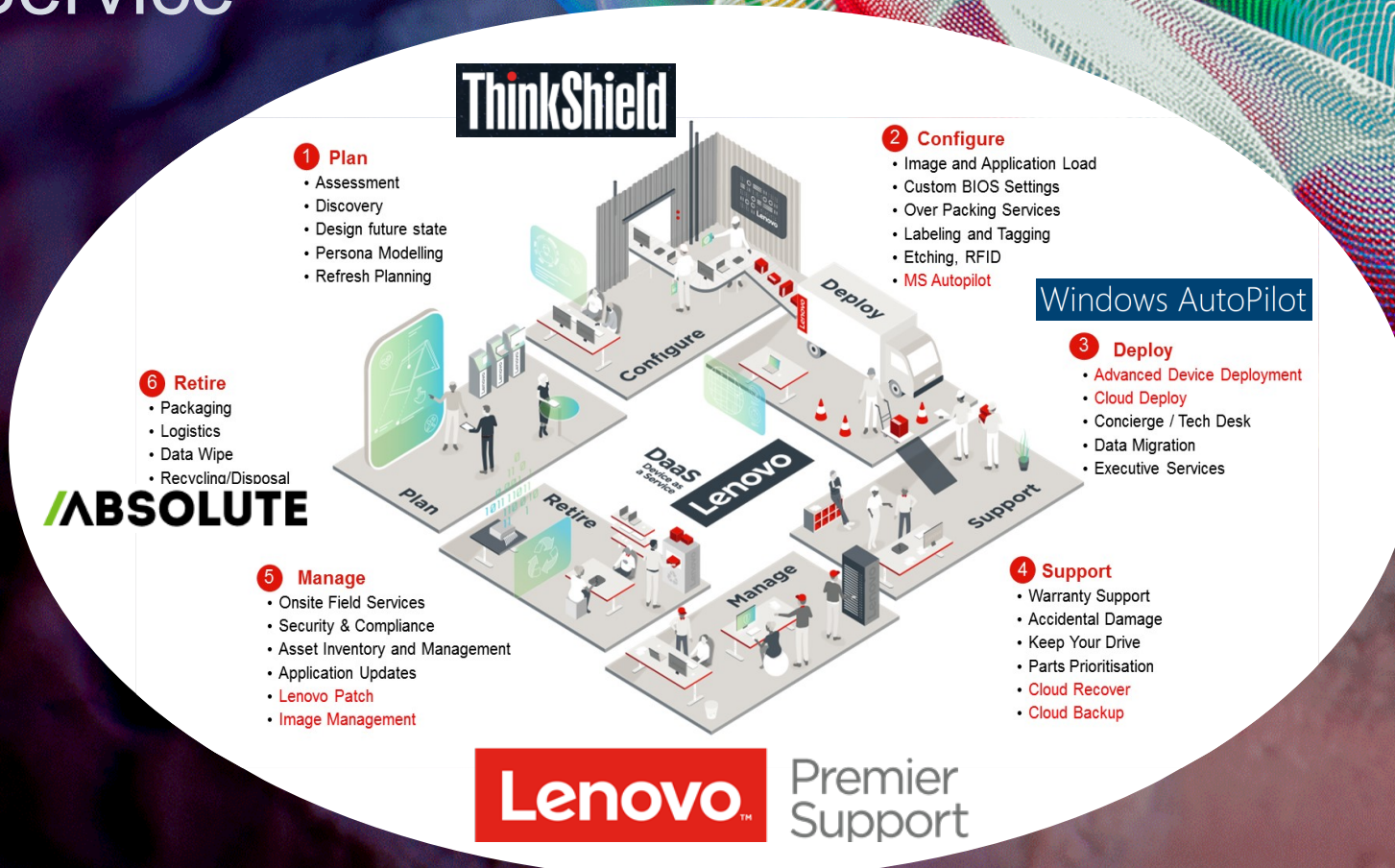


Lenovo

2019 Lenovo Internal. All rights reserved.

- Transform Your IT
- Tailored Service Offerings
- Fully Managed Device as a Service

PIONEERING NEW MODELS OF SERVICES INNOVATION



A close-up photograph of a hand holding a string of warm white LED lights. The hand is positioned in the center, with fingers slightly spread. The lights are strung in a loose, circular pattern around the hand. The background is a solid, muted blue. The overall mood is warm and innovative.

Becoming **the BEST**
to do business with
BREAKTHROUGH in
Channel Experience
with global initiative

INVESTING IN
A NEXT
GENERATION
CHANNEL
EXPERIENCE

thanks.

Different is better

Lenovo