

Reactive Networks

Andreas Enotiadis | CTO, SDN & NFV EMEAR



ATCS

ALL THE COOL SH*T

DIGITIZATION: THE NEXT WAVE OF SERVICE PROVIDER TRANSFORMATION AND INNOVATION



New Things Connected

- SP **Networks**
- Mobile device and apps
- Sensors and wearables
- Cell towers
- Homes



New Data Flows

- Personalized customer data
- Network data
- Sensor data



Process Innovation

- Network transformation
- Customer management
- Field operations optimization from remote cell tower monitoring
- Fraud prevention
- Solution integration



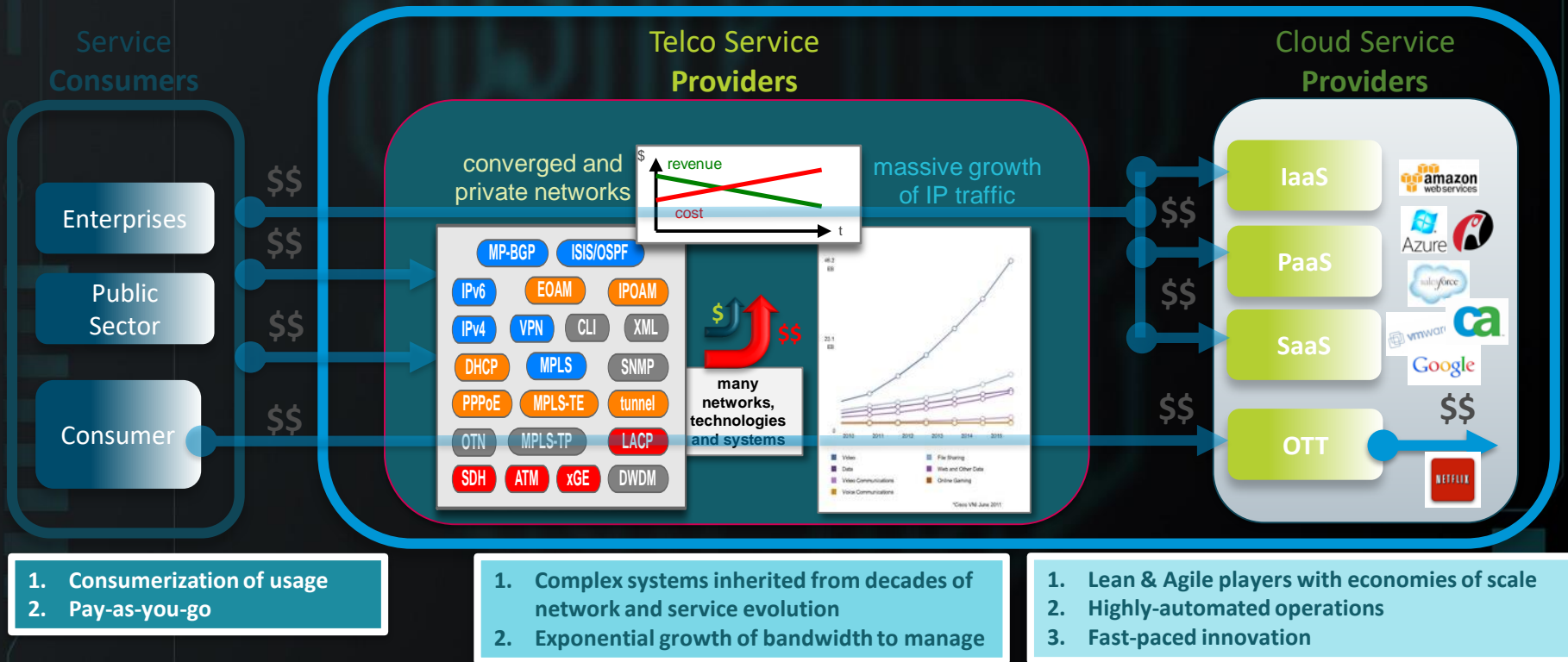
People Impact

- Improved end-user experience
- Scalability of network operation teams
- Improved performance of sales and marketing teams

\$2T in Digitization and IoT Value-at-Stake for Service Providers (2015–2024)

THE STATE OF AFFAIRS

The Internet

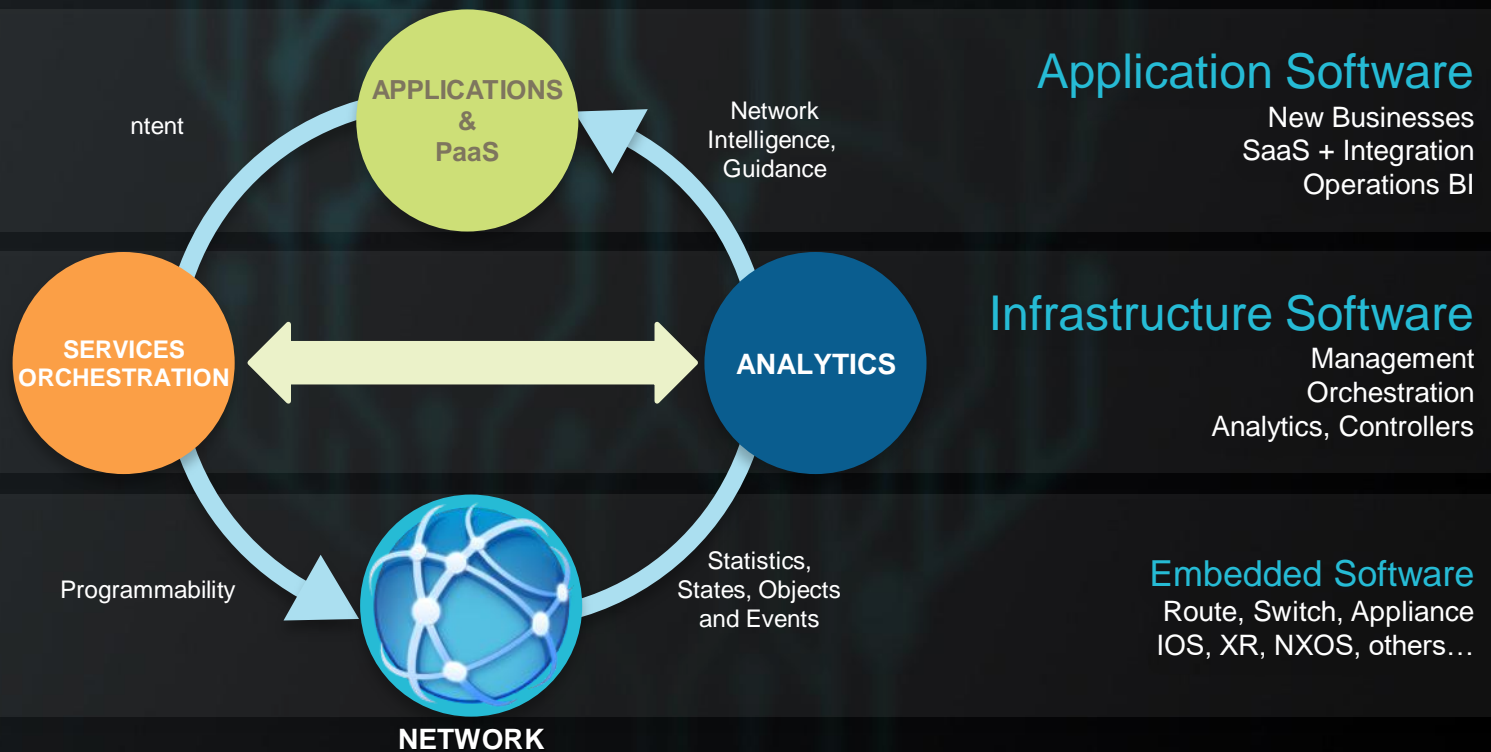


OLD MODEL: SILOED



SDN == REACTIVE NETWORKING

Turning data into information to drive intent





THE FULL STACK

APPLICATIONS & PaaS

Applications to enable Business Outcomes

A set of business outcomes that can be presented to users via a portal that exposes the services to be consumed as defined by the operator along with the tools for the operator to effectively manage the system.

ANALYTICS

Data Analytics Platform

Provides a framework to collect all of the metrics, statistics, counters, log and events data from the entire software and hardware platform that can be used by a set of analytic modules to turn the data into actionable information that applications can use to make informed requests of the infrastructure.

SERVICES ORCHESTRATION

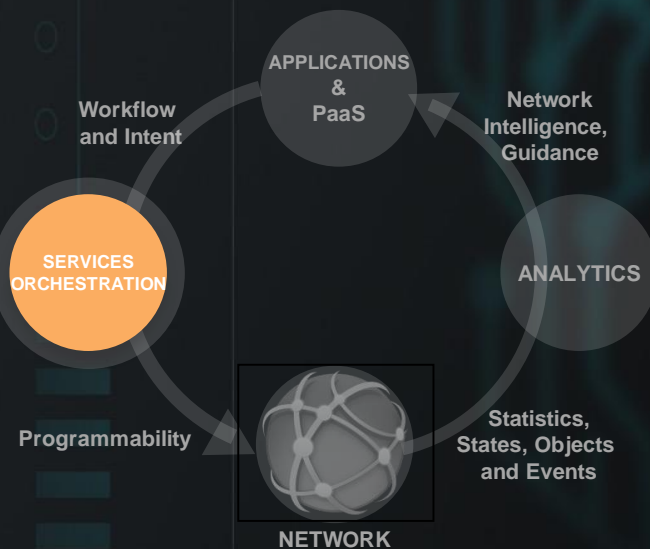
Orchestration Platform

Harnessing a complete set of SDN components to provide a model driven framework that applications can use to program their intent into the compute, network and storage infrastructure to realize the business outcomes.



Network Platform

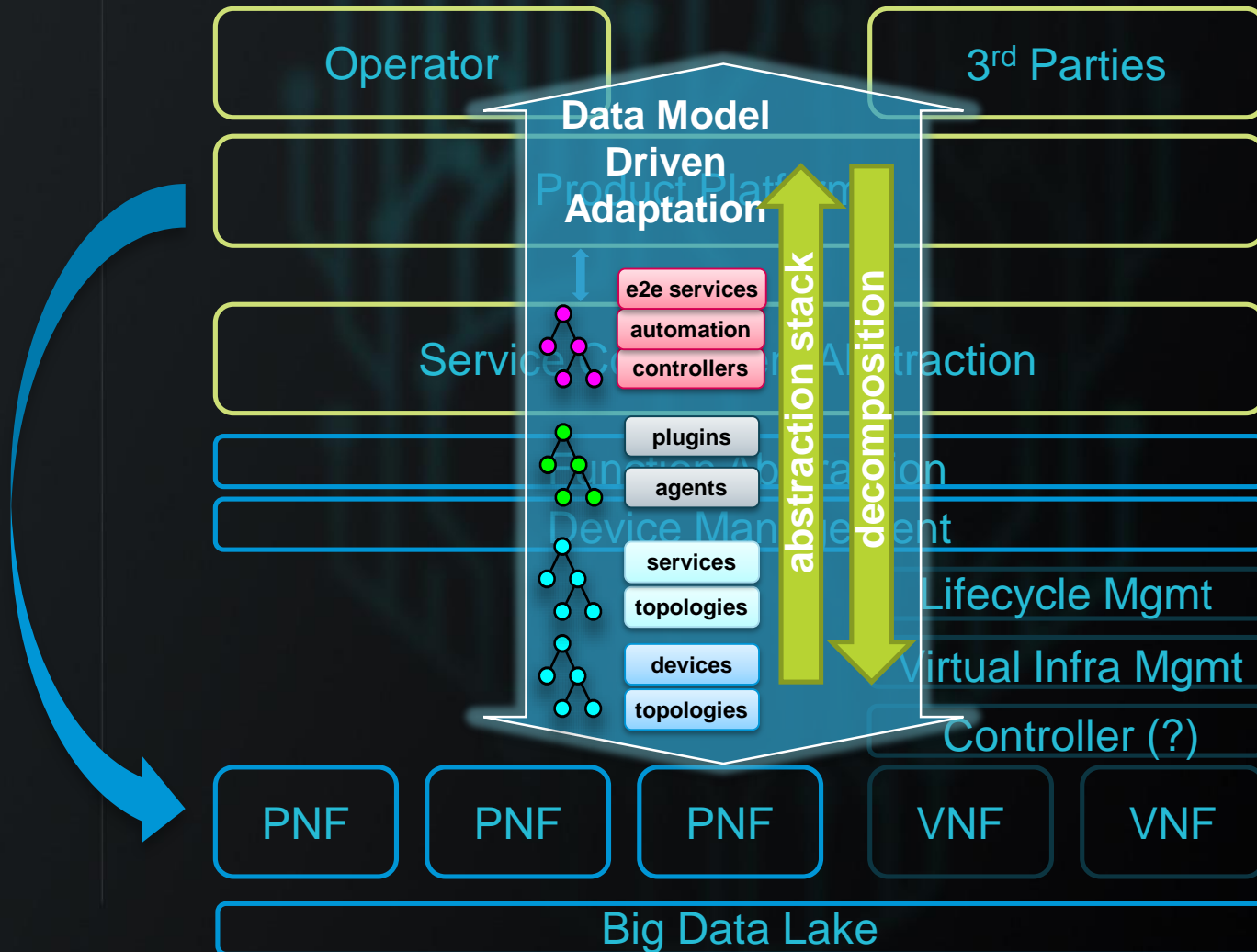
Creating the scalable foundation for services across Edge, WAN and Data Center



Services Orchestration Platform

Incorporating the model and policy driven orchestration capabilities of the Cisco/Tail-f solution along with the SDN controller functionality provided by ODL. This platform provides a complete network services life-cycle manager combined with a VNF life cycle manager that can implement both simple and complex service topologies that span the network and data center domains.

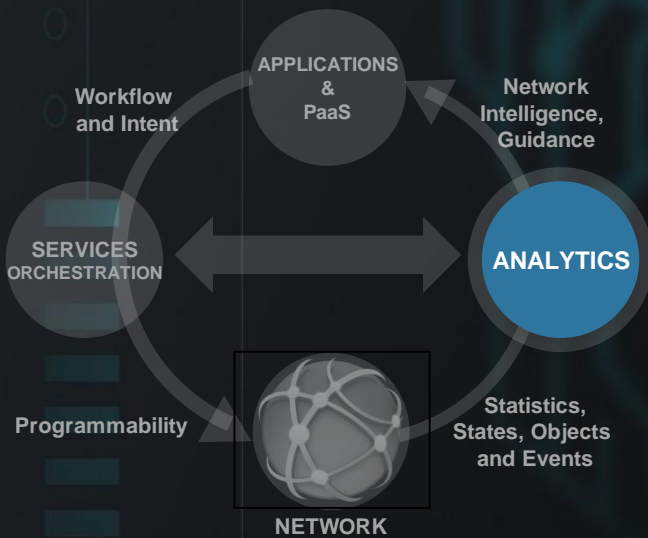
REFERENCE MODEL





A SERVICES MARKETPLACE

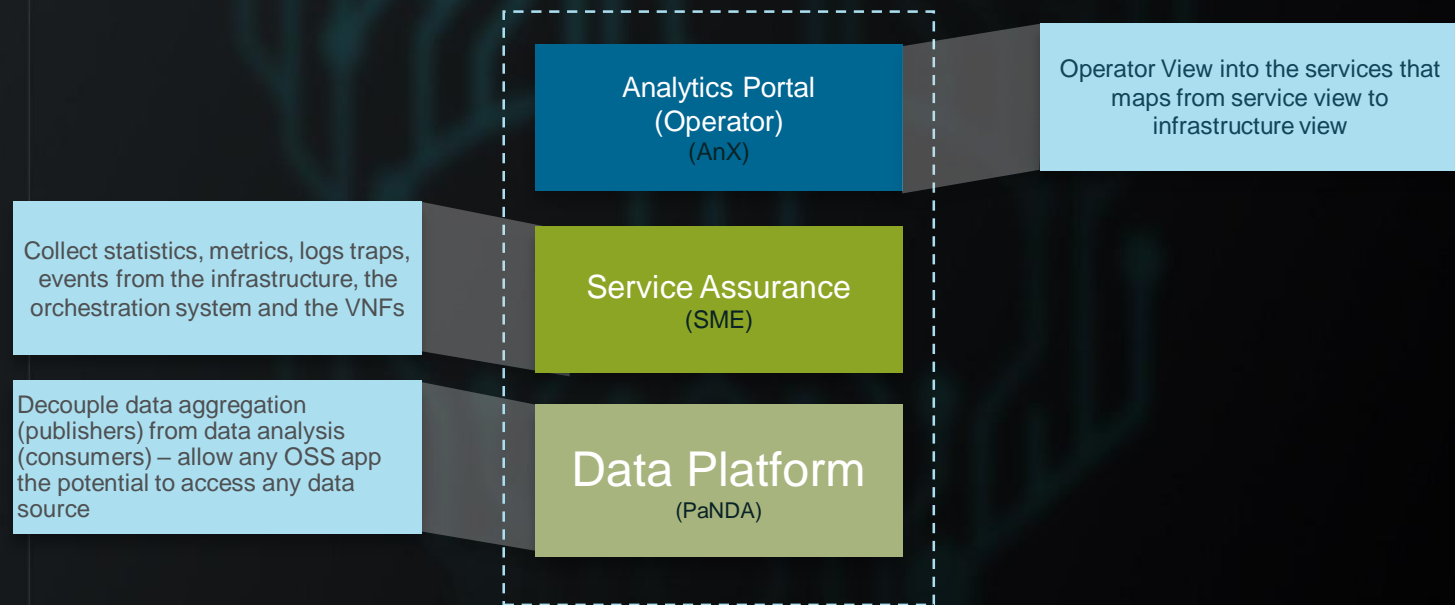




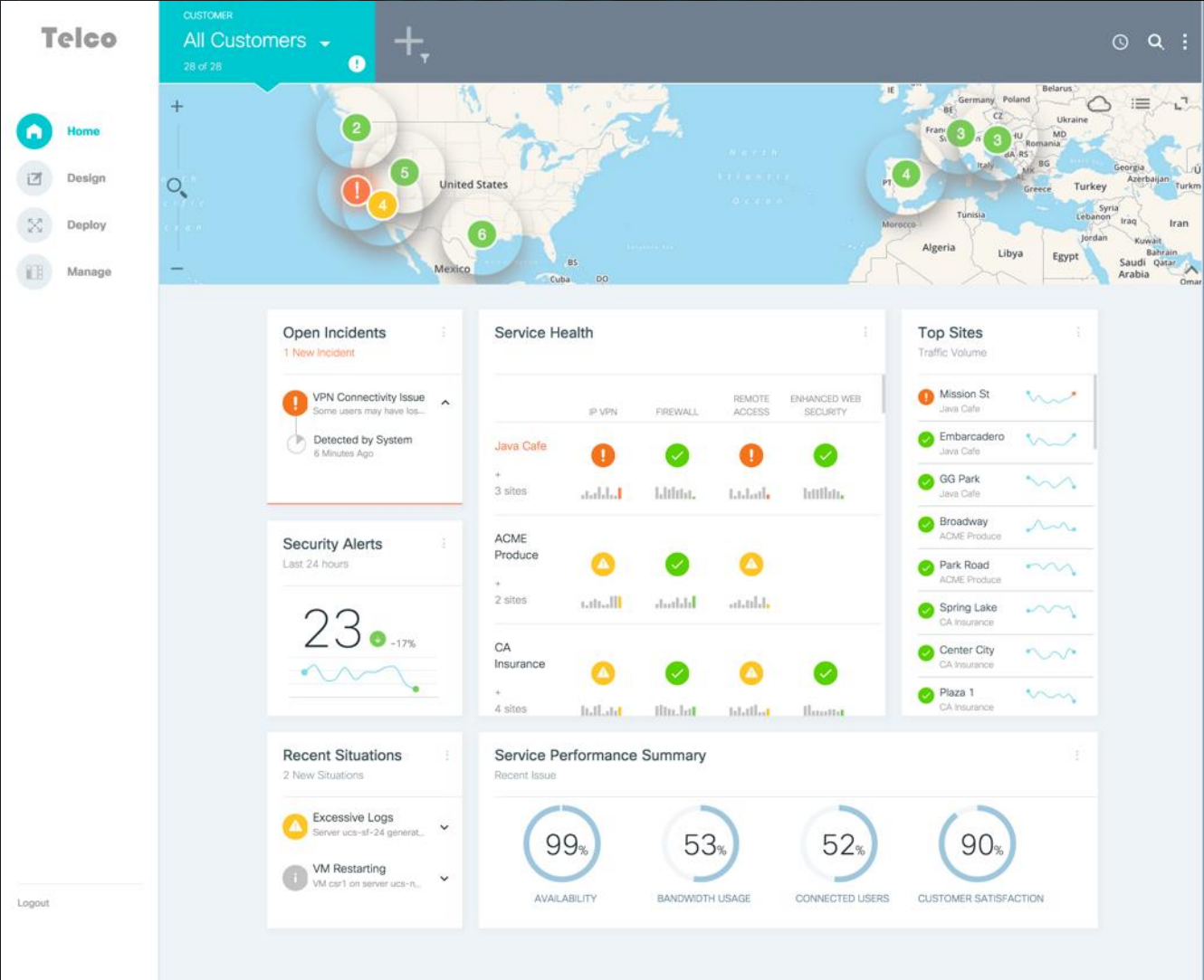
Analytics

A set of tools and APIs that can be used by application developers to gain access to real-time state of the network, data center, services & infrastructure so they can make informed requests of the network to implement their policy and intent.

ASSURANCE & ANALYTICS COMPONENTS



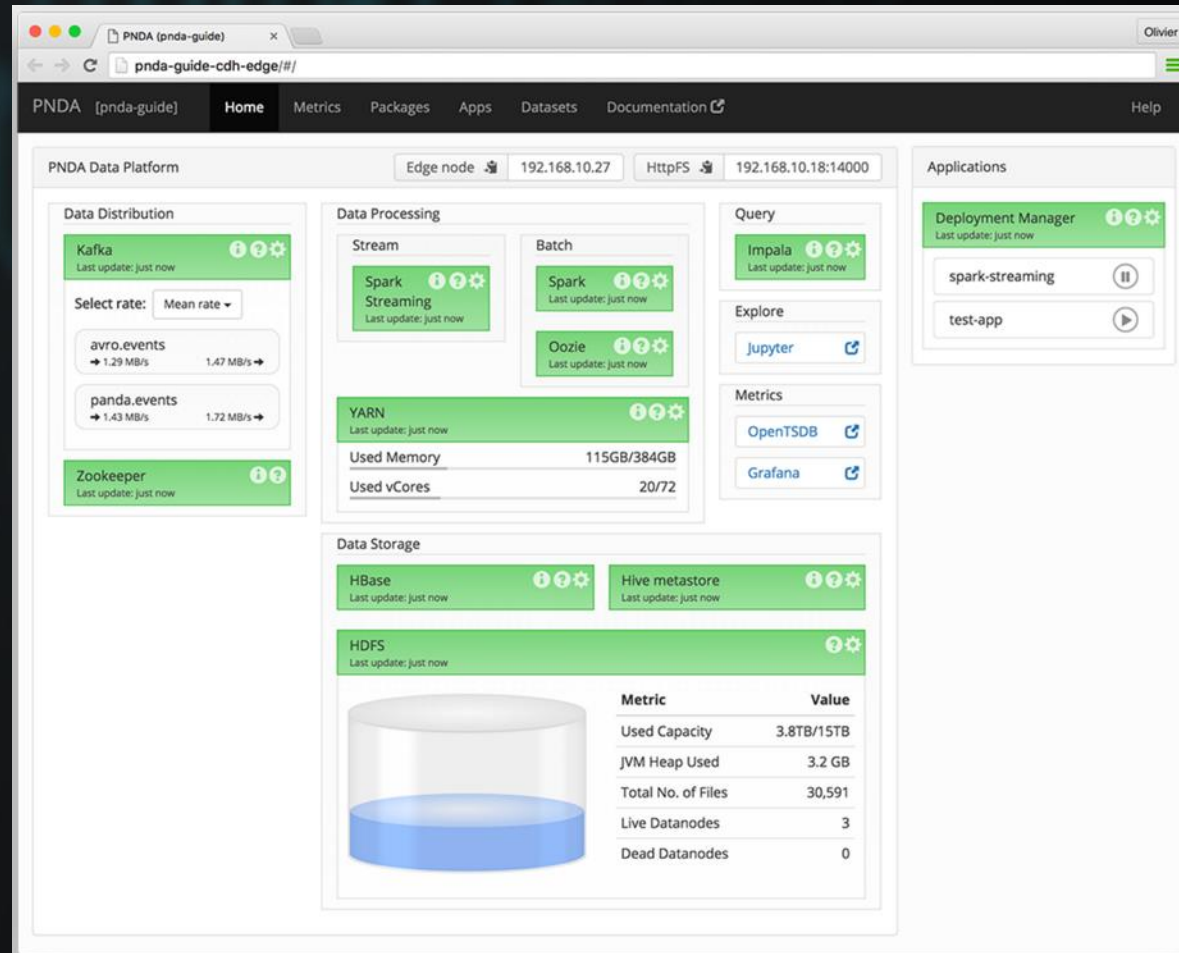
ADVANCED NETWORK ANALYTICS

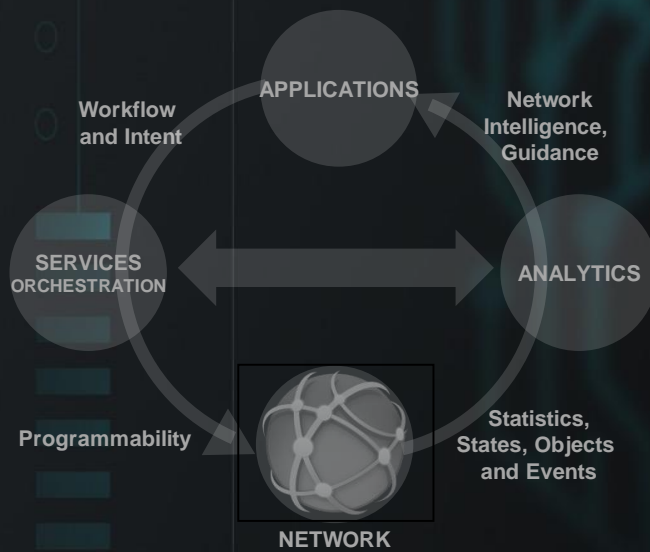


PLATFORM FOR DATA ANALYTICS



- Opensource Platform
- Composed of a set of Opensource tools
- Pre-packaged, Mid-stream Opensource Project
- CloudScale
- Big Data Architecture
- Can be leveraged for many types of applications/environments (Media, Consumer, Enterprise, Analytics, etc)





USE CASES

GENERALIZED USE CASE





ATCS
ALL THE COOL SH*T